



ISO 60 mm



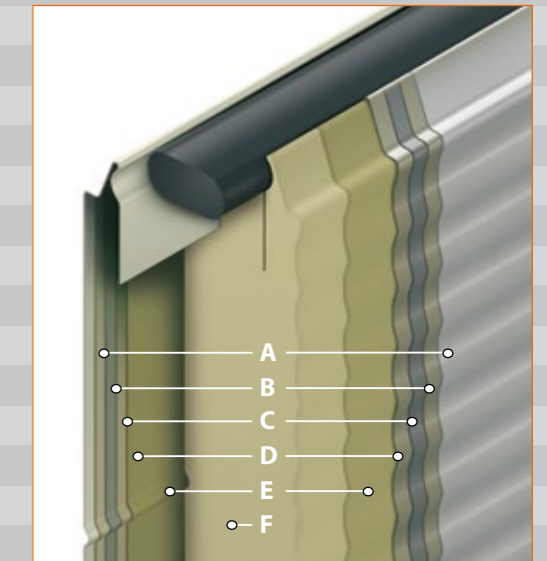
The effective partition between climate zones

ISO 60 mm sectional doors are overhead doors with extra-insulating and sealing properties that are mainly used in locations where the division between different climate zones is important. If you need to keep your production hall or storage area at a constant temperature, the ISO 60 mm door is the right one for you. The micro-profiled steel plate panels have excellent sound-absorbing and heat-insulating properties and they can withstand all the elements.



Sandwich-construction ISO 60 mm panel

Panel thickness: 60 mm
 Insulation value: $U=0.35 \text{ W/m}^2\text{K}$
 Density PU foam: 40 kg/m^3

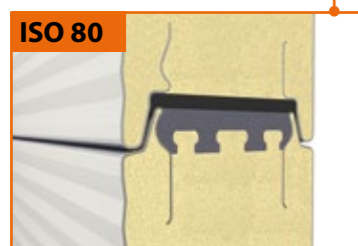
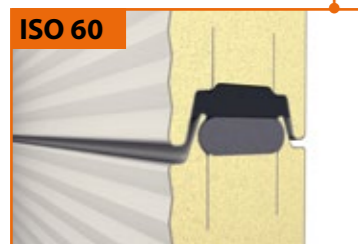
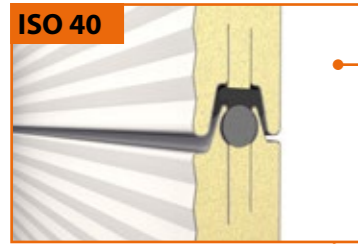


- A Paint layer: 10 standard colours (outside)
 - B Zinc coating: 275 g/m^2
 - C Steel sheet: 0.5 mm
 - D Zinc coating: 275 g/m^2
 - E Primer coating
 - F PU high density foam: $\rho=40 \text{ kg/m}^3$, and HCFC-free
- E Primer coating
 - D Zinc coating: 275 g/m^2
 - C Steel sheet 0.5 mm
 - B Zinc coating: 275 g/m^2
 - A Paint layer: RAL 9002 (inside)

Very high insulative value

The panels of the ISO sectional doors are manufactured using what is known as the sandwich method, a process that entails a layer of CFC-free rigid polyurethane foam being inserted between two zinc-coated steel plate sheets and glued in place. The doors are available in 10 standard colours. The steel plate sheets can also be spray painted in a RAL colour of your choosing.

U-value ISO 60 mm sectional door: 5,000 x 5,000 mm: $0.77 \text{ W/m}^2\text{K}$



Panel seal

The panels of the ISO 40/60/80 door are specially sealed to make them completely wind and waterproof using Compriband, a polyurethane sealing strip that is attached between the panels. Additionally, the ISO 40/60 doors are fully insulated, because the inner and outer door panels are not attached to each other.



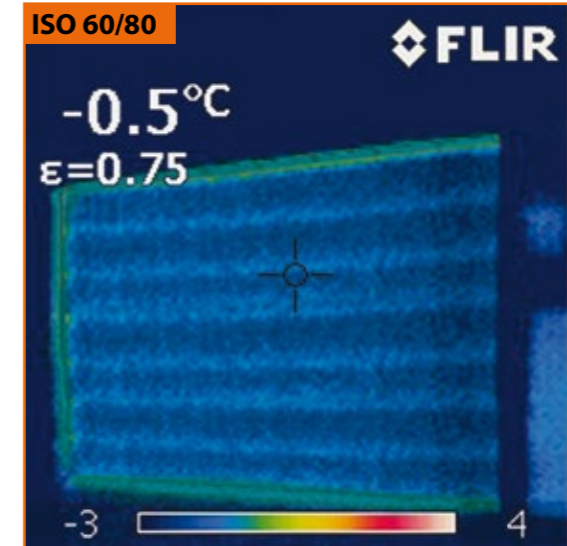
Standard frame

The standard frame between the door and the vertical railing ensures that the sides of the door seal properly.



Heavy-duty frame

We use this type of frame for doors with a dark colour. Due to the heat of the sun, the door may expand in the middle against the upper lintel. The heavy-duty frame prevents this from happening.



Infrared imaging

The ISO 60 mm and ISO 80 mm sectional door insulates even more effectively than the ISO 40 mm door. We check this feature by taking infrared images of the assembled doors. Any light spots indicate where energy loss occurs, while the dark regions are well-insulated.



Wind load

Depending on the width of the door, Alpha will install reinforcing profiles on the door. Thanks to these, the door is able to withstand a heavy wind load, in accordance with the applicable rules and standards. At a door width from 4200 mm (ALU 40) / 5000 mm (ALU 60) each second panel has a profile. With a door width from 5000 mm (ALU 40) / 5800 mm (ALU 60), each section has a reinforcement profile.



The interior

The interior of the ISO 40 mm and ISO 60 mm sectional door is horizontally profiled, the ISO 80 sectional door is stucco profiled and is coated in RAL 9002 as a standard. Other colours are available on request at an additional cost.